

Lily 1

WILDFLOWER SERIES



Traditional Farmhouse Elevation (A)
2191 SQ.FT.



Rustic Farmhouse Elevation (B)
2191 SQ.FT.



Modern Farmhouse Elevation (C)
2191 SQ.FT.

Lily 1

2191 SQ.FT. | 3 Bedrooms | 2.5 Baths | Double Car Garage

WILDFLOWER SERIES

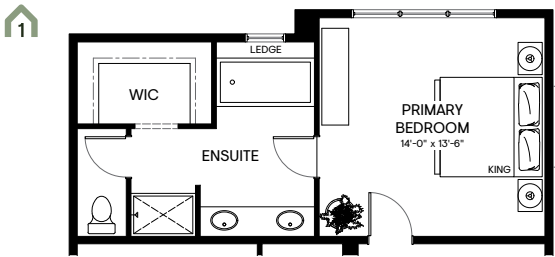


Main floor
997 sq.ft.

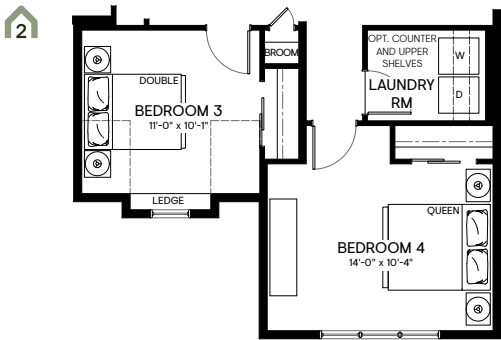
Upper floor
1194 sq.ft.

Basement
(undeveloped)

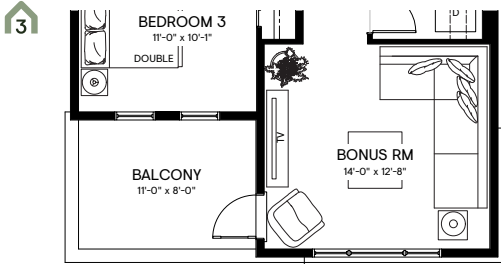
FLEX OPTIONS



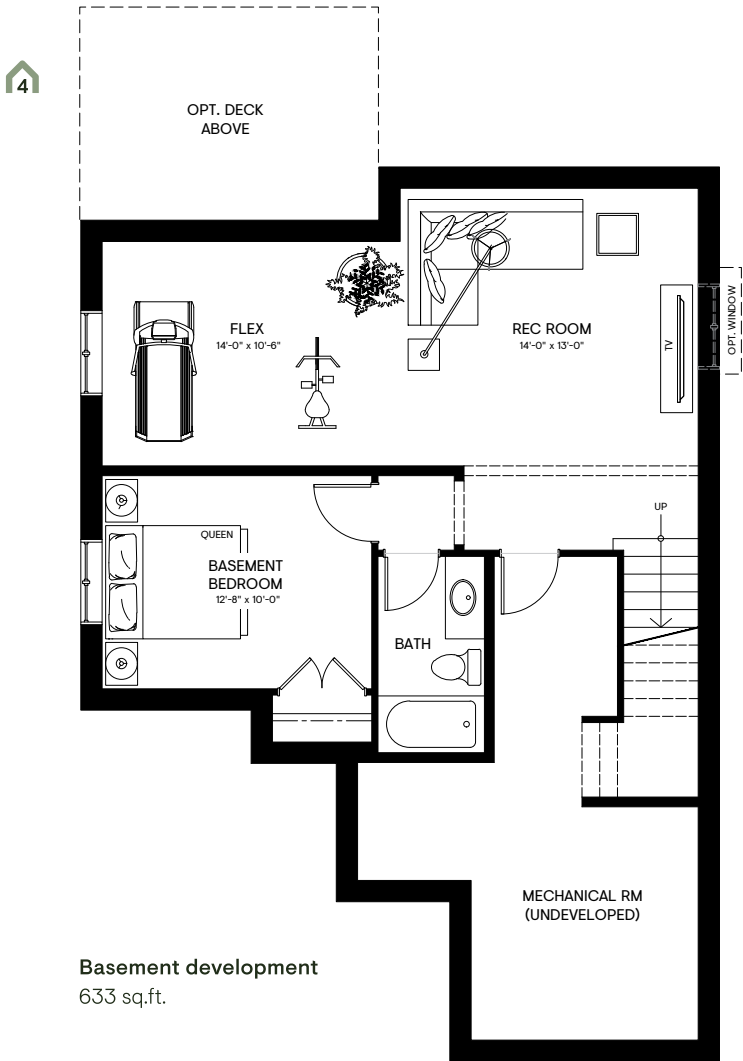
Ensuite upgrade



4th Bedroom in lieu of bonus room
*Note: If purchased w/ front balcony option, the access to the balcony will be from Bedroom 4



Front balcony option
*Only available with the Modern Farmhouse Elevation (C)



Basement development
633 sq.ft.

The Developer reserves the right to make revisions if deemed appropriate in its sole discretion to all plans, dimensions, and specifications provided, including but not limited to window location and size. Actual usable floor space may vary from the stated floor area. The purchase price does not include any vehicles, accessories, or equipment shown. Renderings are artist's concepts only. Marketing floorplans reflect Traditional Farmhouse Elevation A (38SF3201) unless otherwise stated. This drawing contains information which is proprietary to and is the property of the Developer and may not be used, reproduced, or disclosed in any manner other than in relation to the purchase of a home within this project without the permission of the Developer. Pricing subject to change without notice. E. & O. E. Revised September 2023.